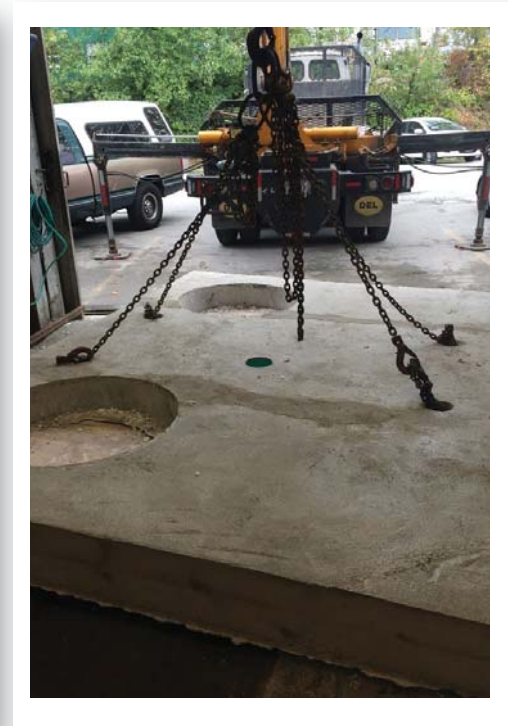
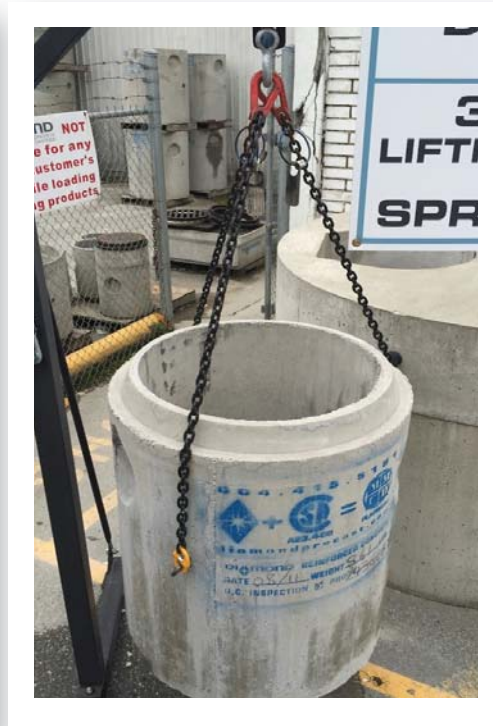


# Certified Lifting Chains and Lifting Pins





## Certified Lifting Chain and Lifting Pin Transfer of Ownership and Liability

### ALL LIFTING CHAINS & LIFTING PINS ARE NON-RETURABLE & NON-REFUNDABLE

This is to confirm that the products listed below are certified by the manufacturer for a period of ONE YEAR from the date stamped on the tag attached to the Lifting Chain and Lifting Pins. Customer accepts full responsibility for the items listed below and understands that after purchasing the items from Diamond Precast that they accept full responsibility for annual re-certification of the product. Diamond Precast Concrete Ltd. accepts no responsibility or liability for the use of the Lifting Chains and Lifting Pins.

1. *Lifting Pin 7/8" (UNALLOY - IWRC)*
2. *Chain 4-Leg-3/8" x 14'2 -GR 100 w/ chain slings c/w self-locking hooks (UNALLOY-IWRC)*
3. *Chain 4-Leg-9/32"x7'-GR 100 chain sling %" master link w/ IT Eye hook w/latch (UNALLOY-IWRC)*